

KING

HOME 501 E



1BD.87

1 Bedroom + Atelier
1 Bathroom

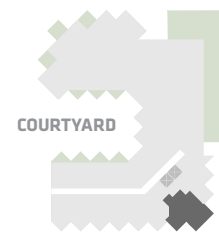
Total Living:
914 ft²

Interior Living:
852 ft²

Exterior Living:
62 ft²

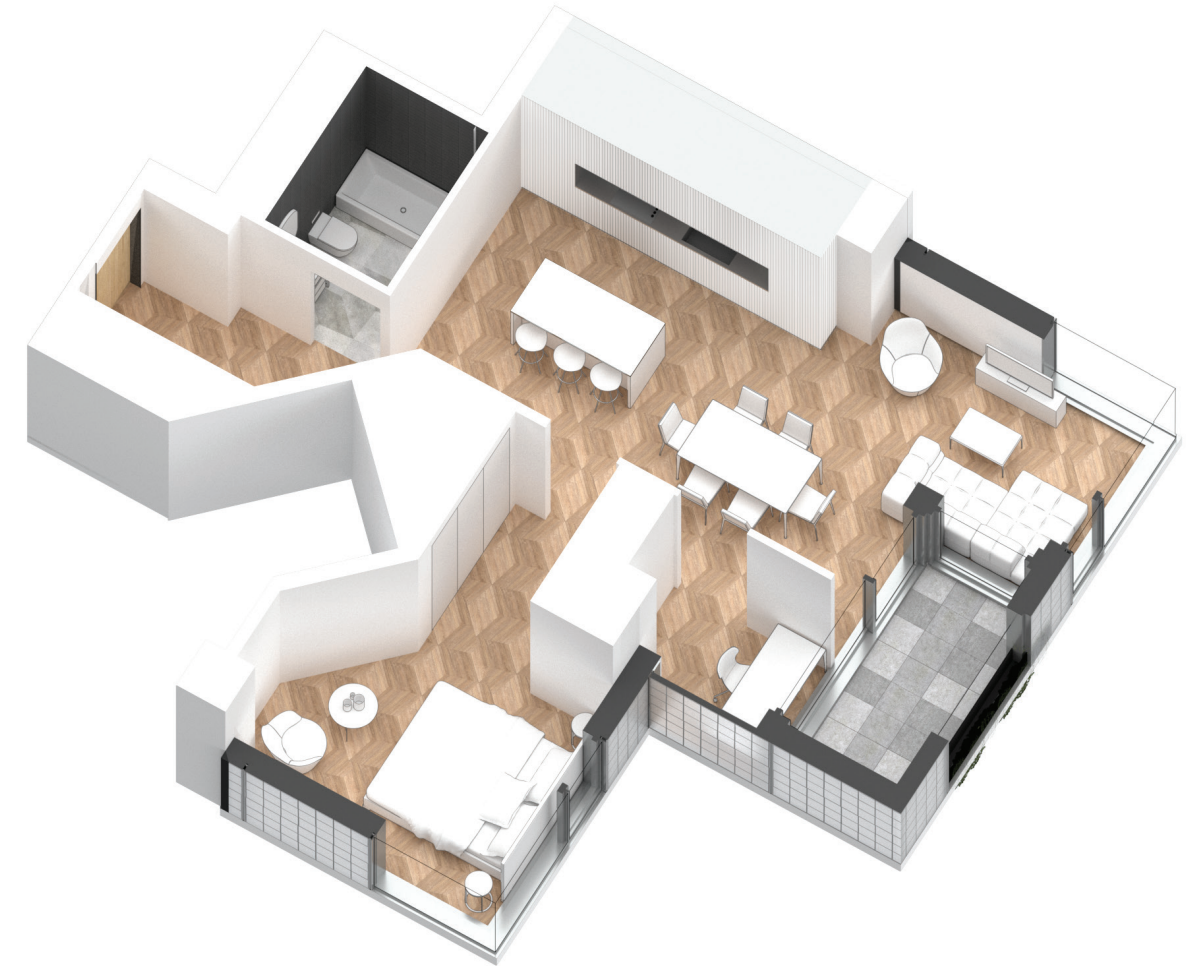
LIVING	9' 3" X 11' 11"
DINING	11' 4" X 11' 0"
BEDROOM	10' 4" X 11' 11"
ATELIER	5' 5" X 6' 0"
BALCONY	4' 11" X 9' 3"

KING STREET WEST



COURTYARD

EAST MOUNTAIN KEYPLAN



All dimensions and specifications are approximate. Certain plans are reverse or mirror image. Balcony square footages are estimated and may vary from that stated. Please see Sales Representative for details. Furniture not included. Refer to key plan for unit location and orientation. E. & O.E.

KING

HOME 503 E



1BD.01D

**1 Bedroom + Atelier
1 Bathroom**

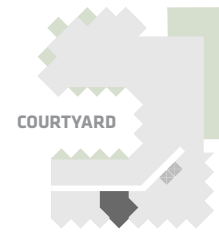
**Total Living:
714 ft²**

Interior Living:
642 ft²

Exterior Living:
72 ft²

LIVING	11' 8" x 9' 7"
DINING	10' 5" x 8' 0"
BEDROOM	11' 7" x 9' 5"
ATELIER	7' 1" x 4' 8"
BALCONY	11' 0" x 4' 11"

KING STREET WEST



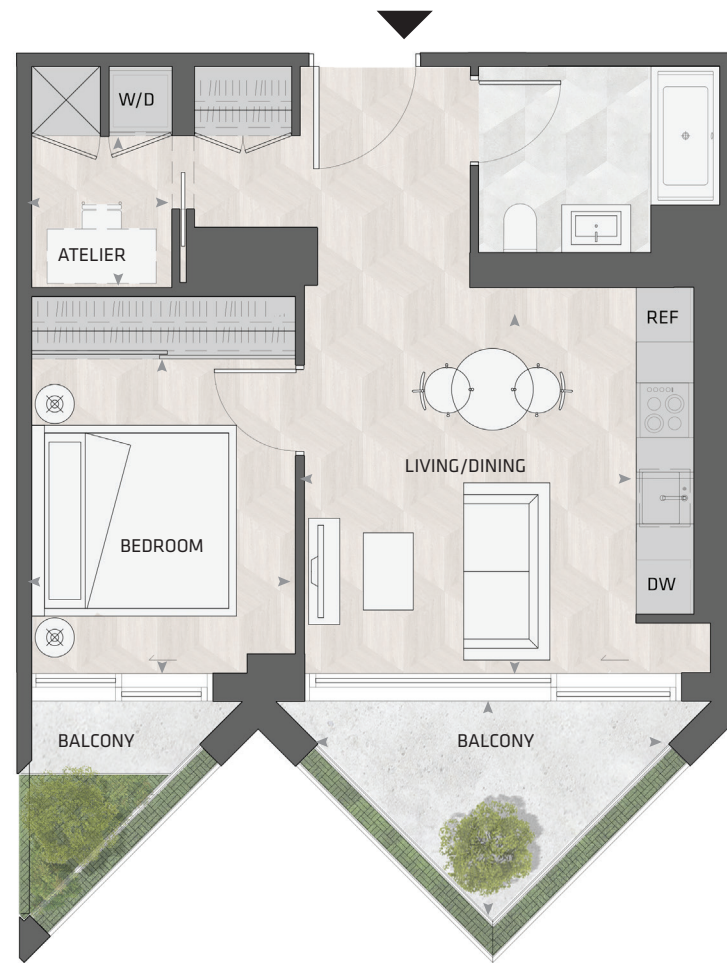
EAST MOUNTAIN KEYPLAN



All dimensions and specifications are approximate. Certain plans are reverse or mirror image. Balcony square footages are estimated and may vary from that stated. Please see Sales Representative for details. Furniture not included. Refer to key plan for unit location and orientation. E. & O.E.

KING

HOME 507 E



1BD.06

**1 Bedroom + Atelier
1 Bathroom**

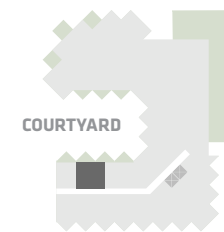
**Total Living:
726 ft²**

Interior Living:
593 ft²

Exterior Living:
132 ft²

LIVING/ DINING	12' 0" X 13' 0"
BEDROOM	9' 6" X 11' 4"
ATELIER	5' 1" X 5' 6"
BALCONY	13' 0" X 7' 9"

KING STREET WEST



COURTYARD

EAST MOUNTAIN KEYPLAN



All dimensions and specifications are approximate. Certain plans are reverse or mirror image. Balcony square footages are estimated and may vary from that stated. Please see Sales Representative for details. Furniture not included. Refer to key plan for unit location and orientation. E. 6 O.E.

KING

HOME 508 E



1BD.06

1 Bedroom + Atelier
1 Bathroom

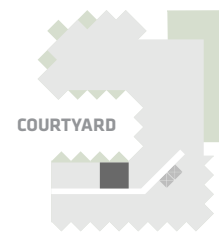
Total Living:
727 ft²

Interior Living:
595 ft²

Exterior Living:
132 ft²

LIVING/ DINING	12' 0" X 13' 0"
BEDROOM	9' 6" X 11' 4"
ATELIER	5' 1" X 5' 6"
BALCONY	13' 0" X 7' 9"

KING STREET WEST



EAST MOUNTAIN KEYPLAN



All dimensions and specifications are approximate. Certain plans are reverse or mirror image. Balcony square footages are estimated and may vary from that stated. Please see Sales Representative for details. Furniture not included. Refer to key plan for unit location and orientation. E. & O.E.

KING

HOME 605 E



1BD.01A

1 Bedroom + Atelier
1 Bathroom

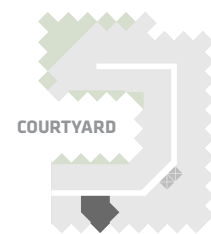
Total Living:
713 ft²

Interior Living:
641 ft²

Exterior Living:
72 ft²

LIVING	11' 2" X 9' 7"
DINING	10' 5" X 8' 1"
BEDROOM	11' 7" X 9' 5"
ATELIER	7' 1" X 4' 8"
BALCONY	11' 0" X 4' 11"

KING STREET WEST



COURTYARD

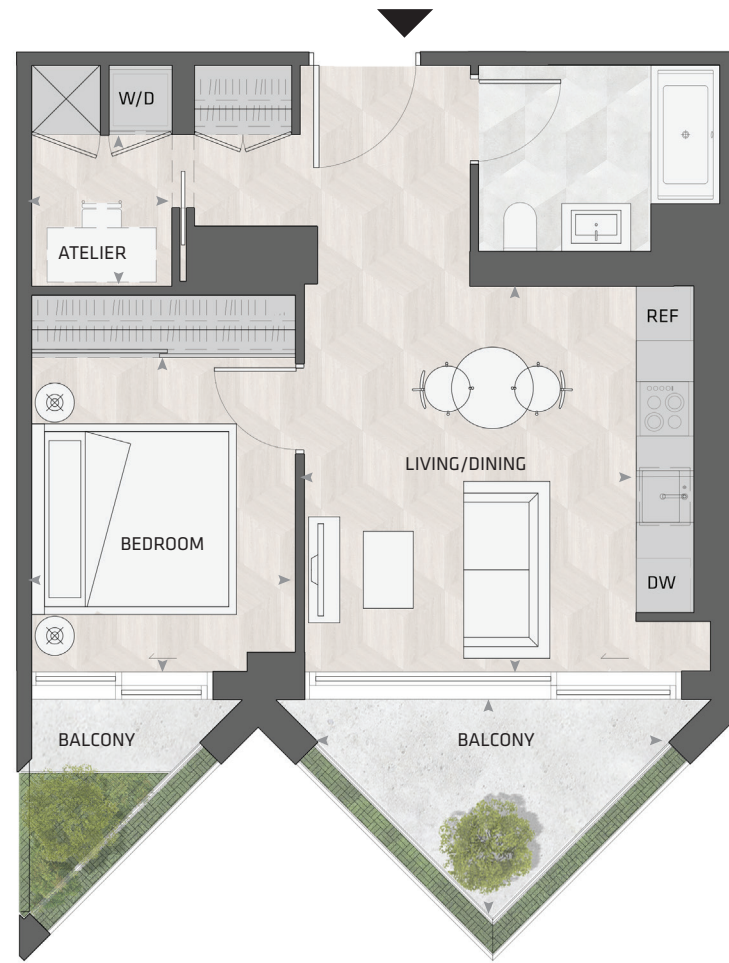
EAST MOUNTAIN KEYPLAN



All dimensions and specifications are approximate. Certain plans are reverse or mirror image. Balcony square footages are estimated and may vary from that stated. Please see Sales Representative for details. Furniture not included. Refer to key plan for unit location and orientation. E. & O.E.

KING

HOME 607 E



1BD.06

1 Bedroom + Atelier
1 Bathroom

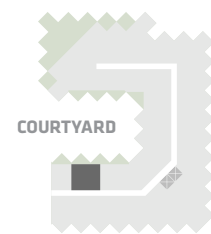
Total Living:
726 ft²

Interior Living:
593 ft²

Exterior Living:
132 ft²

LIVING/ DINING	12' 0" X 13' 0"
BEDROOM	9' 6" X 11' 4"
ATELIER	5' 1" X 5' 6"
BALCONY	13' 0" X 7' 9"

KING STREET WEST



EAST MOUNTAIN KEYPLAN



All dimensions and specifications are approximate. Certain plans are reverse or mirror image. Balcony square footages are estimated and may vary from that stated. Please see Sales Representative for details. Furniture not included. Refer to key plan for unit location and orientation. E. 6 O.E.

KING

HOME 608 E



1BD.06

1 Bedroom + Atelier
1 Bathroom

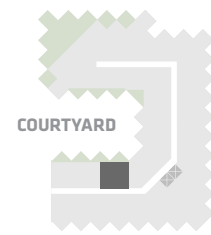
Total Living:
726 ft²

Interior Living:
593 ft²

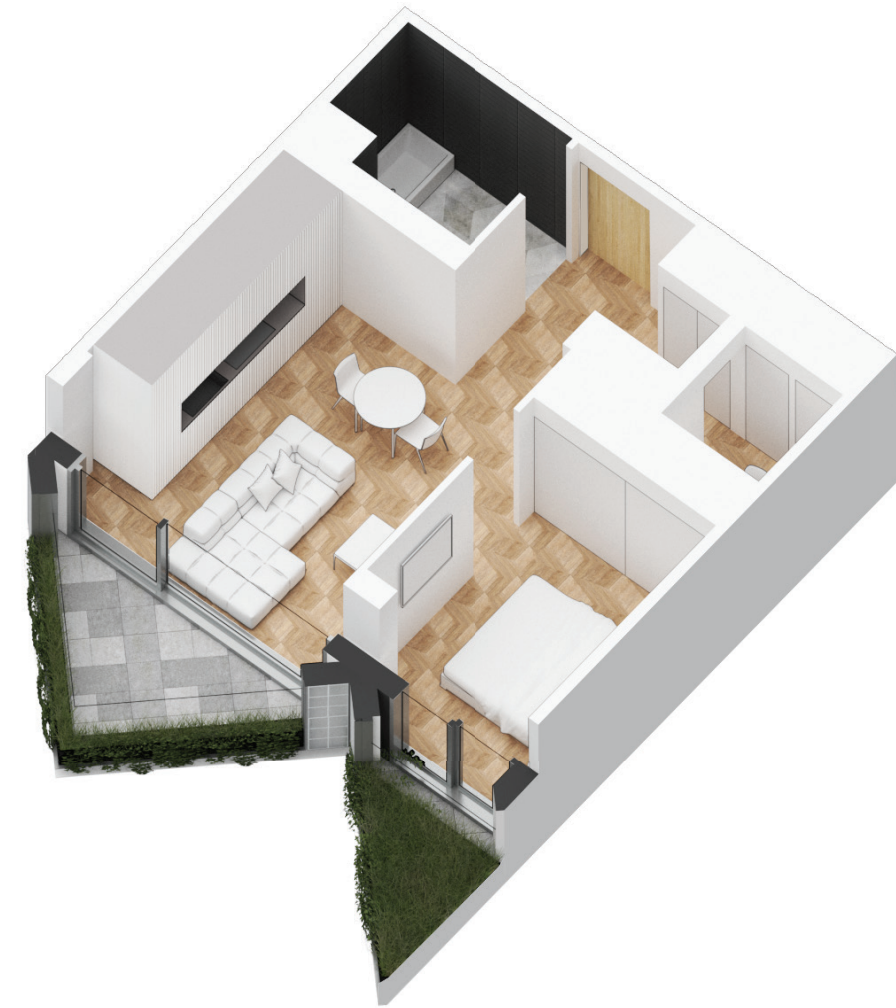
Exterior Living:
132 ft²

LIVING/ DINING	12' 0" X 13' 0"
BEDROOM	9' 6" X 11' 4"
ATELIER	5' 1" X 5' 6"
BALCONY	13' 0" X 7' 9"

KING STREET WEST



EAST MOUNTAIN KEYPLAN



All dimensions and specifications are approximate. Certain plans are reverse or mirror image. Balcony square footages are estimated and may vary from that stated. Please see Sales Representative for details. Furniture not included. Refer to key plan for unit location and orientation. E. 6 O.E.

KING

HOME 616 E



1BD.15

**1 Bedroom + Atelier
1 Bathroom**

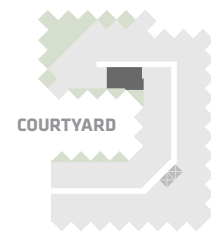
**Total Living:
806 ft²**

Interior Living:
643 ft²

Exterior Living:
163 ft²

LIVING	10' 3" X 8' 3"
DINING	8' 6" X 6' 5"
BEDROOM	12' 1" X 10' 8"
ATELIER	6' 10" X 7' 6"
BALCONY	13' 0" X 7' 9"

KING STREET WEST



COURTYARD

EAST MOUNTAIN KEYPLAN



All dimensions and specifications are approximate. Certain plans are reverse or mirror image. Balcony square footages are estimated and may vary from that stated. Please see Sales Representative for details. Furniture not included. Refer to key plan for unit location and orientation. E. & O.E.

KING

HOME 617 E



1BD.24A

1 Bedroom + Atelier
1 Bathroom

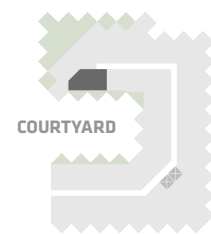
Total Living:
775 ft²

Interior Living:
598 ft²

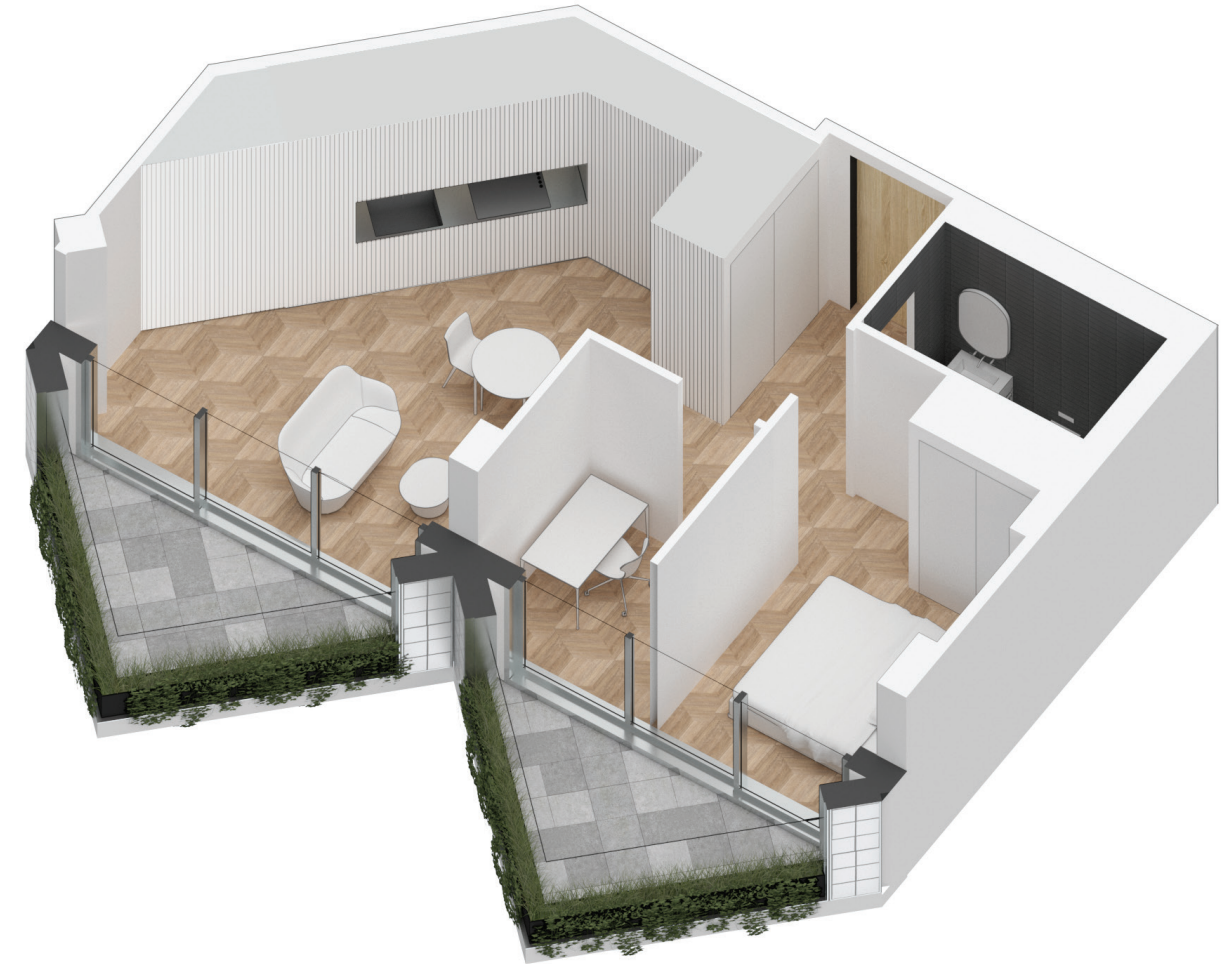
Exterior Living:
177 ft²

LIVING/ DINING	10' 9" X 12' 10"
BEDROOM	8' 7" X 10' 2"
ATELIER	6' 0" X 6' 2"
BALCONY	13' 0" X 7' 9"

KING STREET WEST



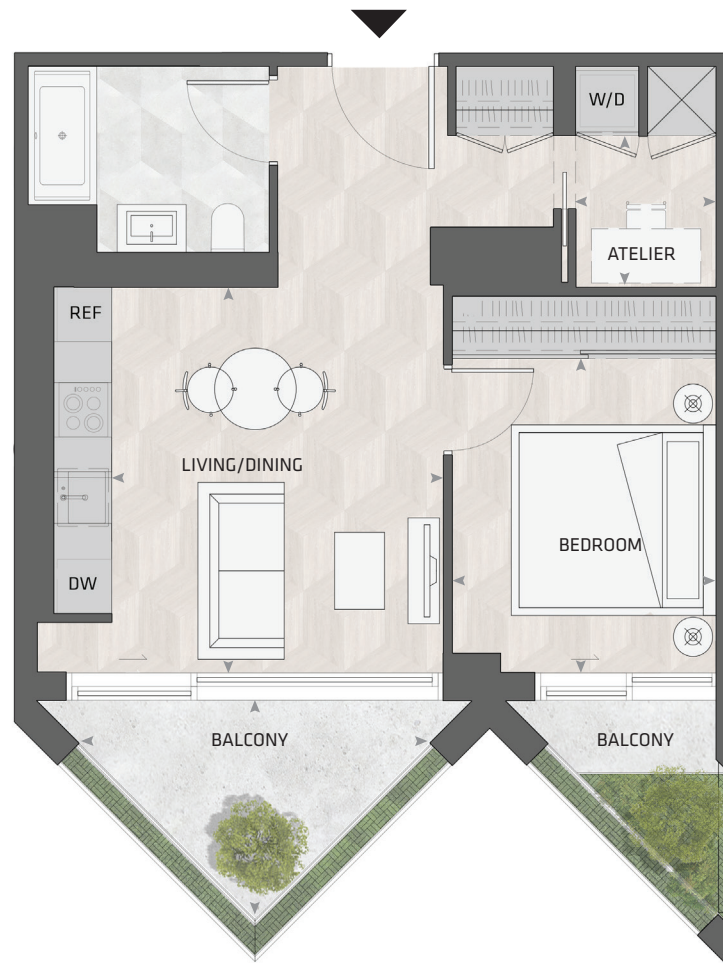
EAST MOUNTAIN KEYPLAN



All dimensions and specifications are approximate. Certain plans are reverse or mirror image. Balcony square footages are estimated and may vary from that stated. Please see Sales Representative for details. Furniture not included. Refer to key plan for unit location and orientation. E. & O.E.

KING

HOME 706 E



1BD.06

1 Bedroom + Atelier
1 Bathroom

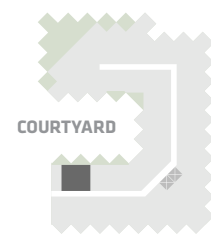
Total Living:
726 ft²

Interior Living:
593 ft²

Exterior Living:
132 ft²

LIVING/ DINING	12' 0" X 13' 0"
BEDROOM	9' 6" X 11' 4"
ATELIER	5' 1" X 5' 6"
BALCONY	13' 0" X 7' 9"

KING STREET WEST



COURTYARD

EAST MOUNTAIN KEYPLAN



All dimensions and specifications are approximate. Certain plans are reverse or mirror image. Balcony square footages are estimated and may vary from that stated. Please see Sales Representative for details. Furniture not included. Refer to key plan for unit location and orientation. E. 6 O.E.

KING

HOME 715 E



1BD.15

**1 Bedroom + Atelier
1 Bathroom**

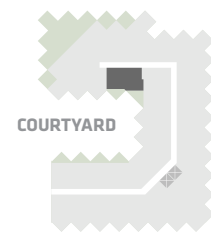
**Total Living:
803 ft²**

Interior Living:
639 ft²

Exterior Living:
163 ft²

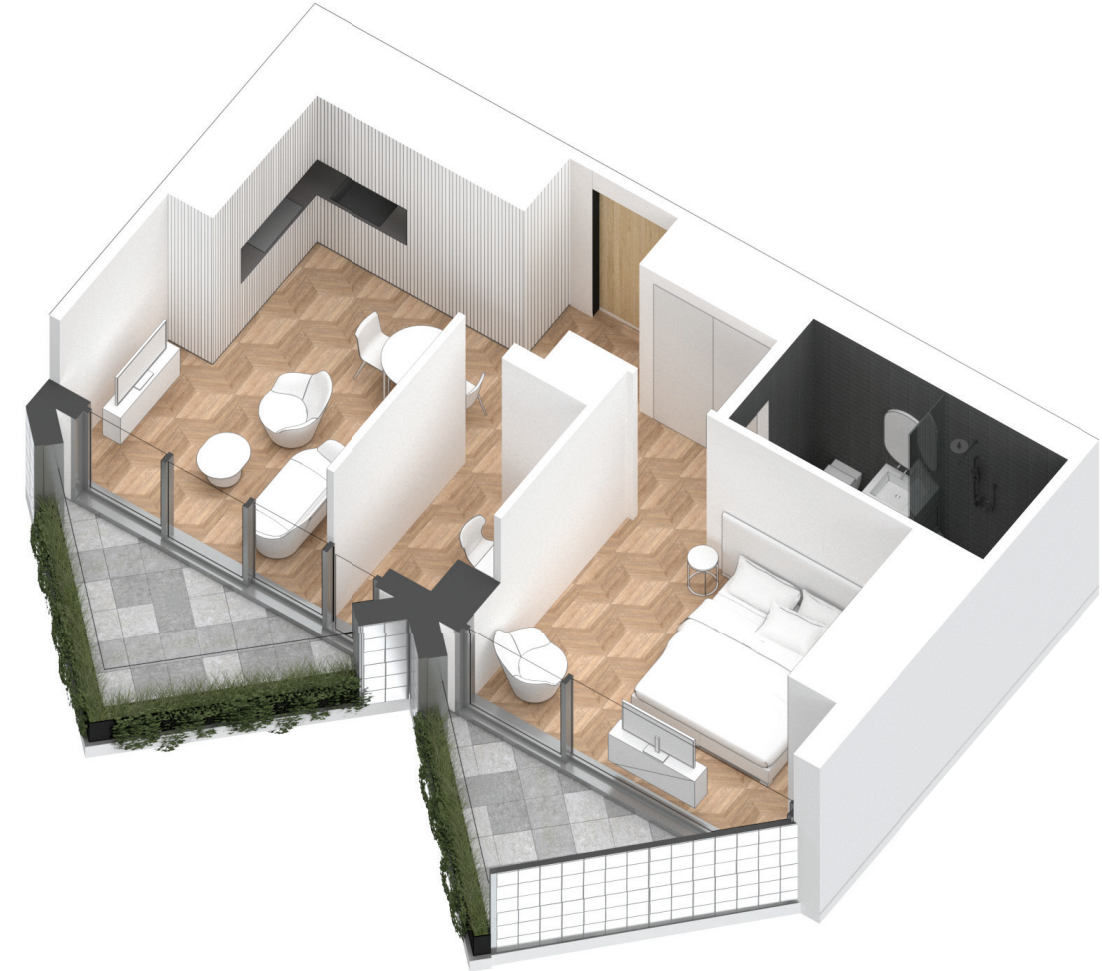
LIVING	10' 3" X 8' 3"
DINING	8' 6" X 6' 5"
BEDROOM	12' 1" X 10' 8"
ATELIER	6' 10" X 7' 6"
BALCONY	13' 0" X 7' 9"

KING STREET WEST



COURTYARD

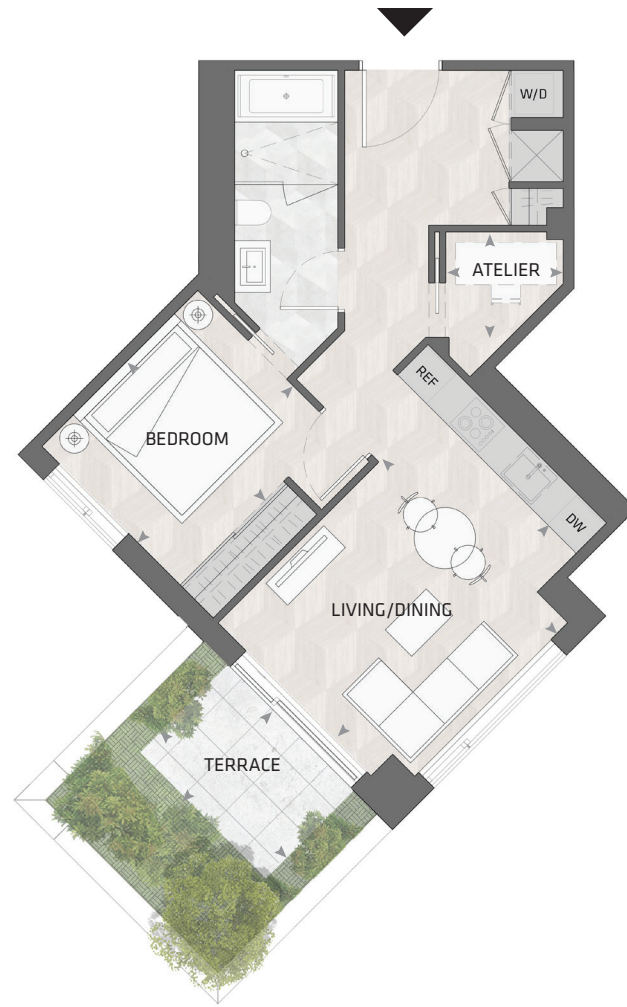
EAST MOUNTAIN KEYPLAN



All dimensions and specifications are approximate. Certain plans are reverse or mirror image. Balcony square footages are estimated and may vary from that stated. Please see Sales Representative for details. Furniture not included. Refer to key plan for unit location and orientation. E. & O.E.

KING

HOME 719 E



1BD.22B

1 Bedroom + Atelier
1 Bathroom

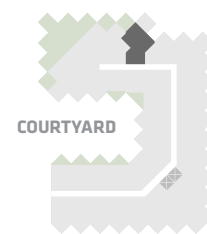
Total Living:
818 ft²

Interior Living:
651 ft²

Exterior Living:
167 ft²

LIVING/ DINING	14' 7" x 11' 11"
BEDROOM	10' 6" x 9' 5"
ATELIER	5' 8" x 5' 1"
TERRACE	6' 8" x 8' 3"

KING STREET WEST



EAST MOUNTAIN KEYPLAN



All dimensions and specifications are approximate. Certain plans are reverse or mirror image. Balcony square footages are estimated and may vary from that stated. Please see Sales Representative for details. Furniture not included. Refer to key plan for unit location and orientation. E. & O.E.

KING

HOME 723 E



1BD.01A

**1 Bedroom + Atelier
1 Bathroom**

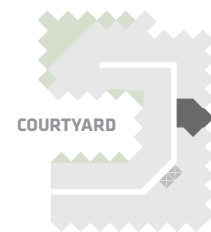
**Total Living:
718 ft²**

Interior Living:
647 ft²

Exterior Living:
72 ft²

LIVING	11' 4" X 9' 7"
DINING	10' 5" X 7' 10"
BEDROOM	11' 7" X 9' 5"
ATELIER	6' 0" X 4' 8"
BALCONY	11' 0" X 4' 11"

KING STREET WEST



COURTYARD

EAST MOUNTAIN KEYPLAN



All dimensions and specifications are approximate. Certain plans are reverse or mirror image. Balcony square footages are estimated and may vary from that stated. Please see Sales Representative for details. Furniture not included. Refer to key plan for unit location and orientation. E. & O.E.

KING

HOME 806 E



1BD.06

1 Bedroom + Atelier
1 Bathroom

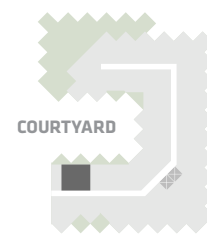
Total Living:
726 ft²

Interior Living:
593 ft²

Exterior Living:
132 ft²

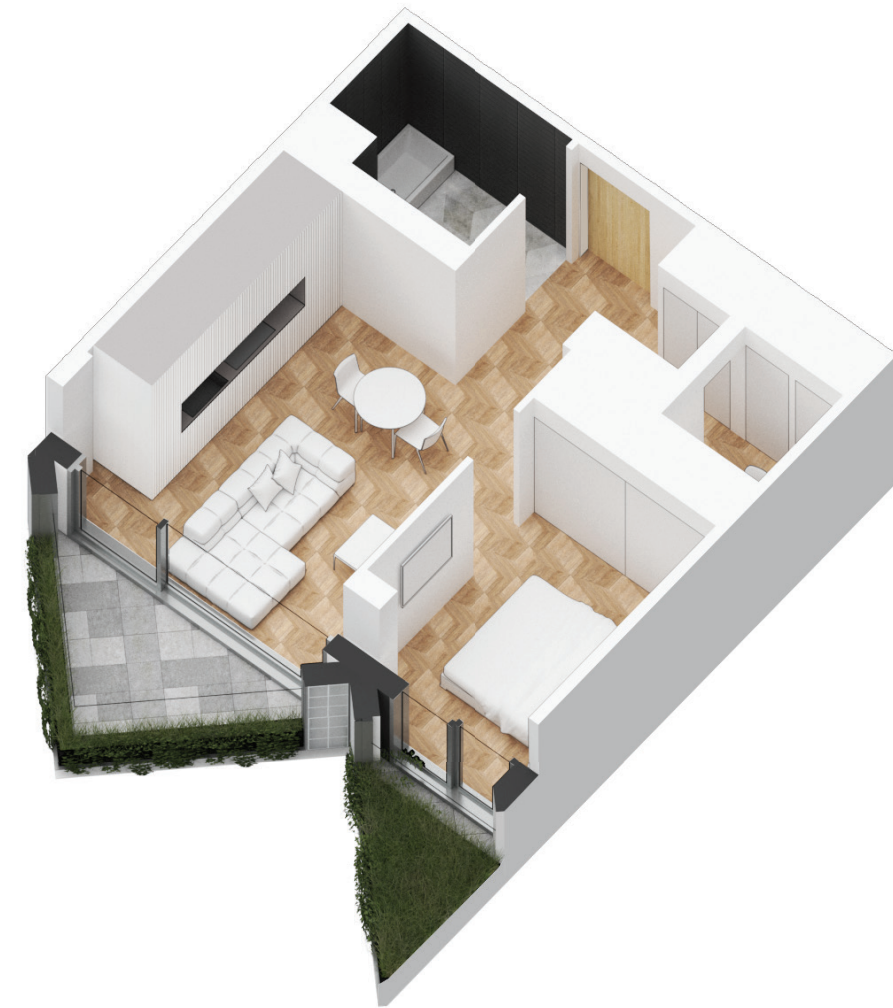
LIVING/ DINING	12' 0" X 13' 0"
BEDROOM	9' 6" X 11' 4"
ATELIER	5' 1" X 5' 6"
BALCONY	13' 0" X 7' 9"

KING STREET WEST



COURTYARD

EAST MOUNTAIN KEYPLAN



All dimensions and specifications are approximate. Certain plans are reverse or mirror image. Balcony square footages are estimated and may vary from that stated. Please see Sales Representative for details. Furniture not included. Refer to key plan for unit location and orientation. E. & O.E.

KING

HOME 815 E



1BD.15

**1 Bedroom + Atelier
1 Bathroom**

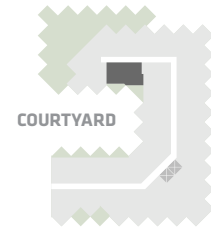
**Total Living:
813 ft²**

Interior Living:
650 ft²

Exterior Living:
163 ft²

LIVING	10' 3" X 8' 3"
DINING	8' 6" X 6' 5"
BEDROOM	12' 1" X 10' 8"
ATELIER	6' 10" X 7' 6"
BALCONY	13' 0" X 7' 9"

KING STREET WEST



COURTYARD

EAST MOUNTAIN KEYPLAN



All dimensions and specifications are approximate. Certain plans are reverse or mirror image. Balcony square footages are estimated and may vary from that stated. Please see Sales Representative for details. Furniture not included. Refer to key plan for unit location and orientation. E. & O.E.

KING

HOME 822 E



1BD.01A

**1 Bedroom + Atelier
1 Bathroom**

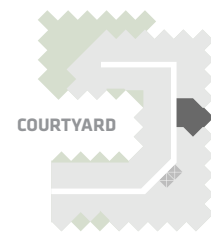
**Total Living:
718 ft²**

Interior Living:
647 ft²

Exterior Living:
72 ft²

LIVING	11' 4" X 9' 7"
DINING	10' 5" X 7' 10"
BEDROOM	11' 7" X 9' 5"
ATELIER	6' 0" X 4' 8"
BALCONY	11' 0" X 4' 11"

KING STREET WEST



COURTYARD

EAST MOUNTAIN KEYPLAN



All dimensions and specifications are approximate. Certain plans are reverse or mirror image. Balcony square footages are estimated and may vary from that stated. Please see Sales Representative for details. Furniture not included. Refer to key plan for unit location and orientation. E. 6 O.E.

KING

HOME 903 E



1BD.01C

**1 Bedroom + Atelier
1 Bathroom**

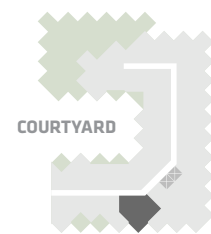
**Total Living:
754 ft²**

Interior Living:
682 ft²

Exterior Living:
72 ft²

LIVING	12' 0" X 9' 10"
DINING	11' 3" X 8' 6"
BEDROOM	11' 10" X 11' 10"
ATELIER	7' 9" X 4' 8"
BALCONY	11' 0" X 4' 11"

KING STREET WEST



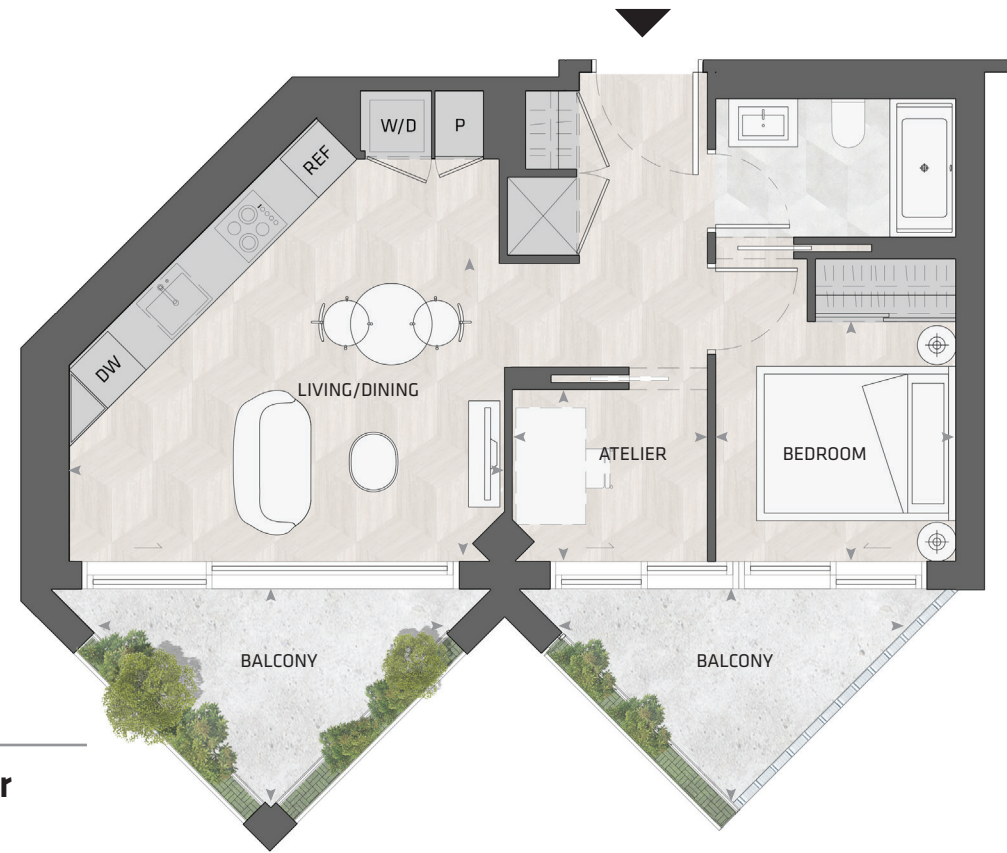
EAST MOUNTAIN KEYPLAN



All dimensions and specifications are approximate. Certain plans are reverse or mirror image. Balcony square footages are estimated and may vary from that stated. Please see Sales Representative for details. Furniture not included. Refer to key plan for unit location and orientation. E. & O.E.

KING

HOME 915 E



1BD.24B

**1 Bedroom + Atelier
1 Bathroom**

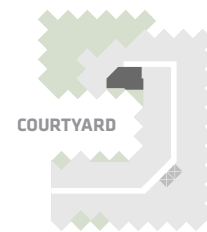
**Total Living:
739 ft²**

Interior Living:
576 ft²

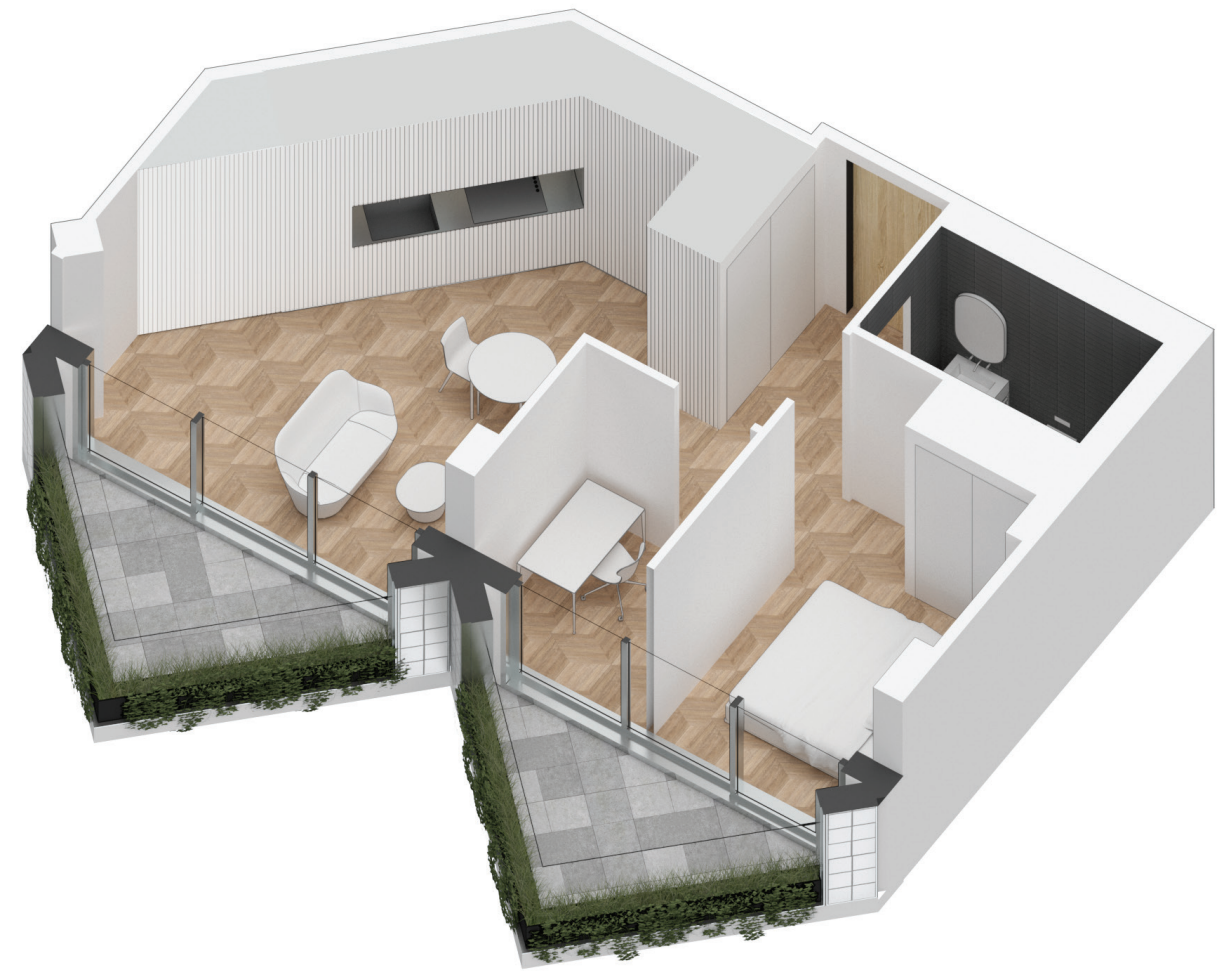
Exterior Living:
163 ft²

LIVING/ DINING	15' 8" X 12' 10"
BEDROOM	8' 9" X 8' 8"
ATELIER	7' 0" X 6' 2"
BALCONY	13' 0" X 7' 9"

KING STREET WEST



EAST MOUNTAIN KEYPLAN



All dimensions and specifications are approximate. Certain plans are reverse or mirror image. Balcony square footages are estimated and may vary from that stated. Please see Sales Representative for details. Furniture not included. Refer to key plan for unit location and orientation. E. & O.E.

KING

HOME 921 E



1BD.01A

1 Bedroom + Atelier
1 Bathroom

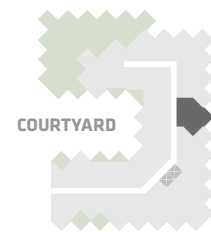
Total Living:
711 ft²

Interior Living:
640 ft²

Exterior Living:
72 ft²

LIVING	11' 4" X 9' 7"
DINING	10' 5" X 7' 10"
BEDROOM	11' 7" X 9' 5"
ATELIER	6' 0" X 4' 8"
BALCONY	11' 0" X 4' 11"

KING STREET WEST



EAST MOUNTAIN KEYPLAN



All dimensions and specifications are approximate. Certain plans are reverse or mirror image. Balcony square footages are estimated and may vary from that stated. Please see Sales Representative for details. Furniture not included. Refer to key plan for unit location and orientation. E. & O.E.

KING

HOME 1003 E



1BD.01C

**1 Bedroom + Atelier
1 Bathroom**

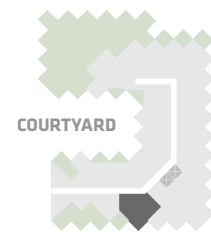
**Total Living:
904 ft²**

Interior Living:
689 ft²

Exterior Living:
215 ft²

LIVING	12' 0" X 9' 10"
DINING	11' 3" X 8' 6"
BEDROOM	11' 10" X 11' 10"
ATELIER	7' 9" X 4' 8"
BALCONY	11' 0" X 4' 11"

KING STREET WEST



EAST MOUNTAIN KEYPLAN



All dimensions and specifications are approximate. Certain plans are reverse or mirror image. Balcony square footages are estimated and may vary from that stated. Please see Sales Representative for details. Furniture not included. Refer to key plan for unit location and orientation. E. & O.E.

KING

HOME 1016 E



1BD.63

1 Bedroom + Atelier
1 Bathroom

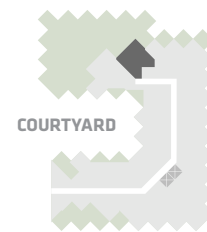
Total Living:
794 ft²

Interior Living:
650 ft²

Exterior Living:
143 ft²

LIVING	11' 2" X 8' 9"
DINING	8' 2" X 13' 0"
BEDROOM	11' 8" X 11' 2"
ATELIER	4' 9" X 5' 1"
TERRACE	9' 1" X 6' 8"

KING STREET WEST



COURTYARD

EAST MOUNTAIN KEYPLAN



All dimensions and specifications are approximate. Certain plans are reverse or mirror image. Balcony square footages are estimated and may vary from that stated. Please see Sales Representative for details. Furniture not included. Refer to key plan for unit location and orientation. E. 6 O.E.

KING

HOME 1018 E



1BD.26

**1 Bedroom + Atelier
1 Bathroom**

**Total Living:
1036 ft²**

Interior Living:
726 ft²

Exterior Living:
310 ft²

LIVING	11' 9" X 12' 0"
DINING	9' 11" X 10' 2"
BEDROOM	11' 8" X 9' 8"
ATELIER	5' 10" X 6' 1"
TERRACE	8' 3" X 6' 8"

KING STREET WEST

COURTYARD

EAST MOUNTAIN KEYPLAN



All dimensions and specifications are approximate. Certain plans are reverse or mirror image. Balcony square footages are estimated and may vary from that stated. Please see Sales Representative for details. Furniture not included. Refer to key plan for unit location and orientation. E. 6 O.E.

KING

HOME 1020 E



1BD.01A

**1 Bedroom + Atelier
1 Bathroom**

**Total Living:
718 ft²**

Interior Living:
647 ft²

Exterior Living:
72 ft²

LIVING	11' 4" X 9' 7"
DINING	10' 5" X 7' 10"
BEDROOM	11' 7" X 9' 5"
ATELIER	6' 0" X 4' 8"
BALCONY	11' 0" X 4' 11"

KING STREET WEST

COURTYARD

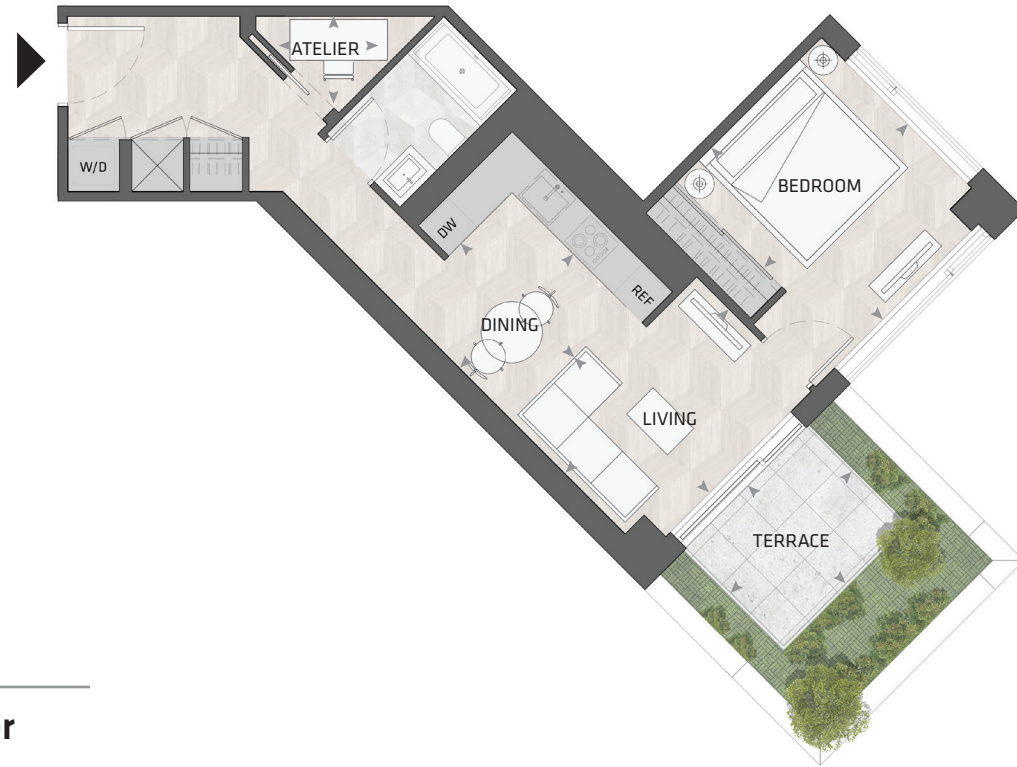
EAST MOUNTAIN KEYPLAN



All dimensions and specifications are approximate. Certain plans are reverse or mirror image. Balcony square footages are estimated and may vary from that stated. Please see Sales Representative for details. Furniture not included. Refer to key plan for unit location and orientation. E. & O.E.

KING

HOME 1106 E



1BD.51

**1 Bedroom + Atelier
1 Bathroom**

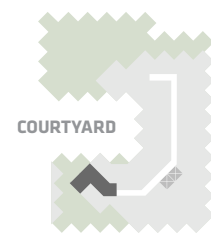
**Total Living:
781 ft²**

Interior Living:
614 ft²

Exterior Living:
167 ft²

LIVING	11' 2" X 9' 2"
DINING	7' 9" X 8' 0"
BEDROOM	9' 10" X 11' 9"
ATELIER	5' 0" X 4' 6"
TERRACE	8' 3" X 6' 8"

KING STREET WEST



EAST MOUNTAIN KEYPLAN



All dimensions and specifications are approximate. Certain plans are reverse or mirror image. Balcony square footages are estimated and may vary from that stated. Please see Sales Representative for details. Furniture not included. Refer to key plan for unit location and orientation. E. 6 O.E.

KING

HOME 1119 E



1BD.01A

1 Bedroom + Atelier
1 Bathroom

Total Living:
718 ft²

Interior Living:
647 ft²

Exterior Living:
72 ft²

LIVING	11' 4" X 9' 7"
DINING	10' 5" X 7' 10"
BEDROOM	11' 7" X 9' 5"
ATELIER	6' 0" X 4' 8"
BALCONY	11' 0" X 4' 11"

KING STREET WEST

COURTYARD

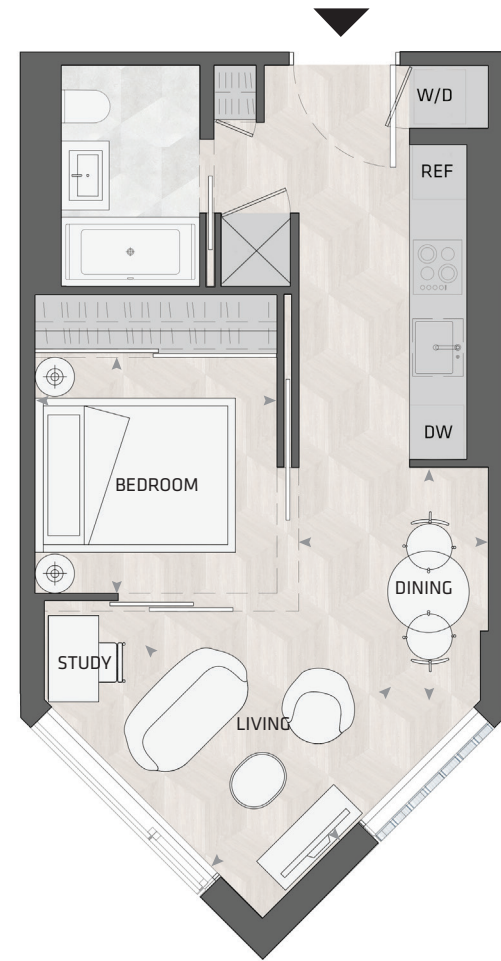
EAST MOUNTAIN KEYPLAN



All dimensions and specifications are approximate. Certain plans are reverse or mirror image. Balcony square footages are estimated and may vary from that stated. Please see Sales Representative for details. Furniture not included. Refer to key plan for unit location and orientation. E. & O.E.

KING

HOME 1209 E



1BD.77

1 Bedroom + Atelier
1 Bathroom

Total Living:
484 ft²

Interior Living:
484 ft²

Exterior Living:
N/A

LIVING	8' 8" X 9' 5"
DINING	6' 7" X 9' 3"
BEDROOM	8' 9" X 8' 6"

KING STREET WEST

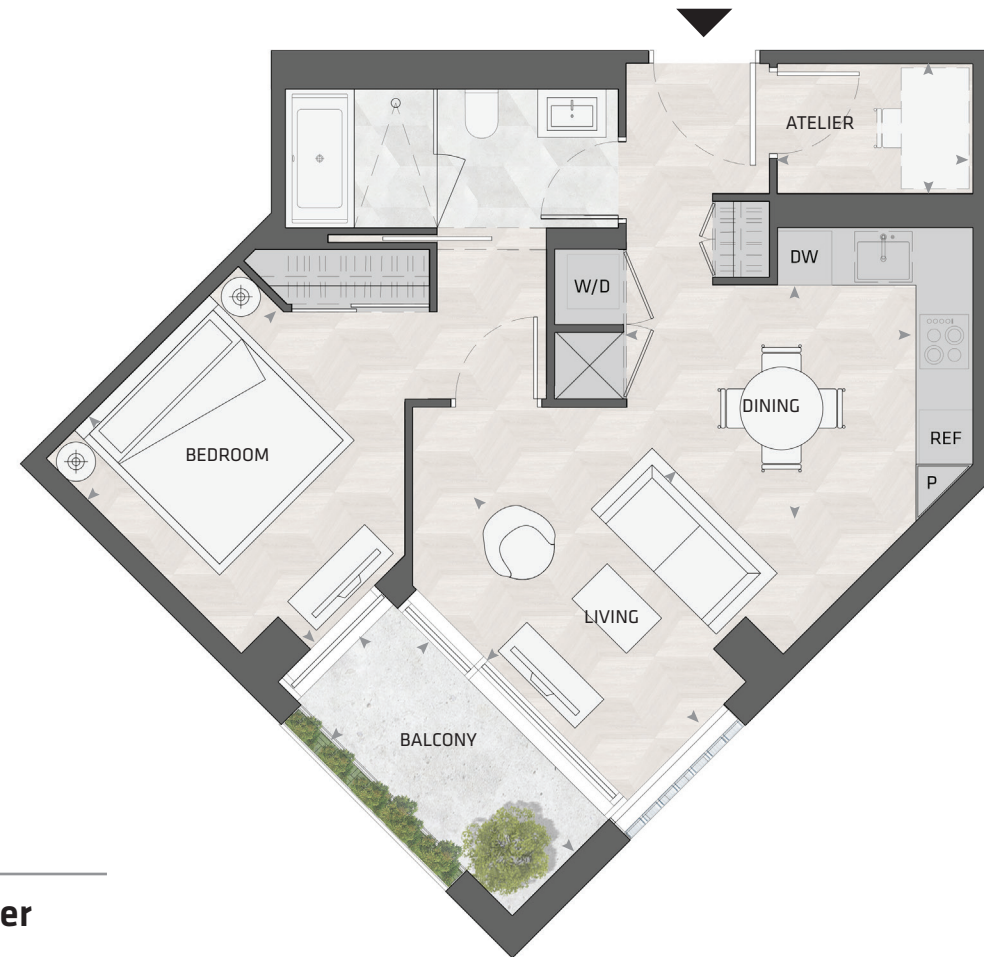
COURTYARD

EAST MOUNTAIN KEYPLAN

All dimensions and specifications are approximate. Certain plans are reverse or mirror image. Balcony square footages are estimated and may vary from that stated. Please see Sales Representative for details. Furniture not included. Refer to key plan for unit location and orientation. E. & O.E.

KING

HOME 1511 E



1BD.01A

1 Bedroom + Atelier
1 Bathroom

Total Living:
723 ft²

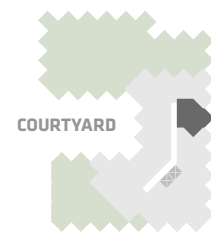
Interior Living:
652 ft²

Exterior Living:
72 ft²

LIVING	11' 2" X 9' 7"
DINING	10' 5" X 8' 1"
BEDROOM	11' 7" X 9' 5"
ATELIER	7' 1" X 4' 8"
BALCONY	11' 0" X 4' 11"

KING STREET WEST

COURTYARD



EAST MOUNTAIN KEYPLAN



All dimensions and specifications are approximate. Certain plans are reverse or mirror image. Balcony square footages are estimated and may vary from that stated. Please see Sales Representative for details. Furniture not included. Refer to key plan for unit location and orientation. E. & O.E.